



PLEASANT VALLEY COUNTY
WATER DISTRICT
SUPPLEMENTAL WATER
ASSIGNMENT WORKSHOP

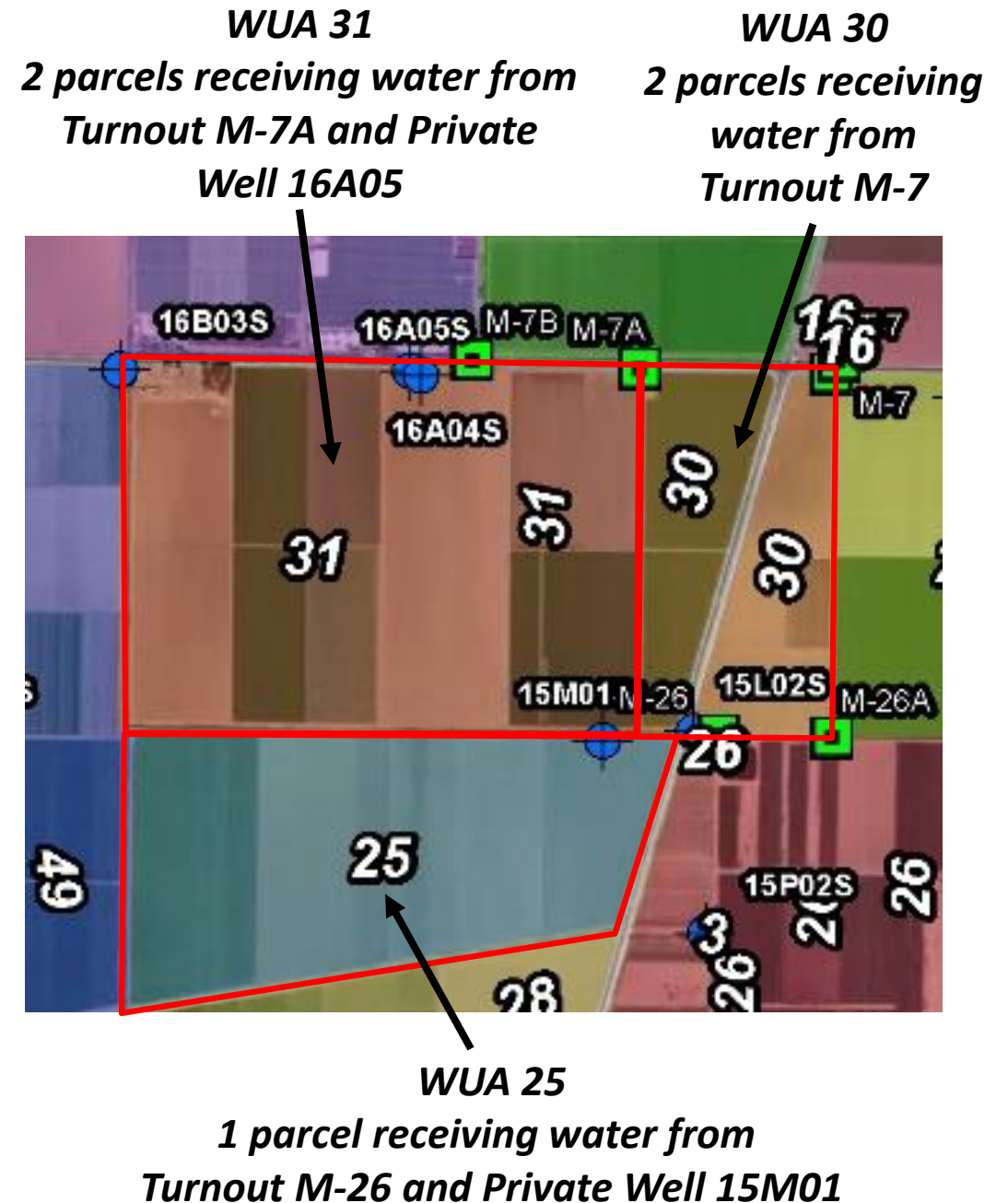
JUNE 29, 2022

AGENDA

1. WHAT IS A WATER USE AREA (WUA) AND SUPPLEMENTAL WATER ASSIGNMENT (SWA)
2. WHY IS PVCWD ESTABLISHING SWA
3. POLICY PRINCIPALS INFORMING THE DEVELOPMENT OF SWA
4. OWNER/OPERATOR OBLIGATIONS
5. SWA CALCULATIONS BACKGROUND – HOW WAS YOUR SWA DETERMINED?
6. HOW TO REVIEW AND VERIFY YOUR WUA INFORMATION
7. NEXT STEPS

WHAT IS A WATER USE AREA (WUA)?

- Parcel or group of parcels that share a common and unique set of District turnout(s) and/or private well(s)
- WUAs are not necessarily tied to ranch ownership or leases. WUAs will include multiple ranches with different owners/operators when a turnout or private well is shared by multiple owners/operators
- Examples: WUA 25, 30, 31



WHAT IS A SUPPLEMENTAL WATER ASSIGNMENT (SWA)?

- SWA is the volume of supplemental water volume that PVCWD will provide for irrigation within to your WUA during a water year (Oct. 1 - Sept. 30).
- *Key Policy Principle: PVCWD will supplement all irrigated lands to the same amount on an acre foot per acre basis.*
- $SWA = SWA \text{ Limit} \times WUA \text{ Irrigated Acres} - WUA \text{ Private Well Allocation}$
- SWA limit for Water Year 2022/2023 is 2.41 AF/acre

WHY IS PVCWD ESTABLISHING SWA?

- October 2019 Fox Canyon Ground Water Management Agency (FCGMA) adopted Oxnard/Pleasant Valley Basin Allocation Ordinance
- The Ordinance assigned allocations to all basin users based on average water use from 2005 to 2014 and transitioned reporting to Water Year October 1 to September 30
- PVCWD is a Supplemental Water Source to users within the PVCWD service area
- PVCWD FCGMA Allocations
 - Ground Water = 7,040 AF or 33%
 - Conejo Creek = 4,974 AF or 23%
 - SCRW Flex = 9,420 AF or 44%
 - Total 21,434 AF

POLICY PRINCIPALS INFORMING THE DEVELOPMENT OF SWA

- Equal Access to water within PVCWD Service Area
- Avoid FCGMA Surcharges
- Avoid opportunities for double-dipping of allocations within the PVCWD service area
- Maximize the use and delivery of Conjunctive Use and Alternative Supplies when available. This benefits everyone in PVCWD and the basin alike.
- Allow for flexibility within PVCWD through pooling of Supplemental Water Assignments and Water Use Areas
- Equitably allocate costs for potential FCGMA surcharges to PVCWD customers who exceed SWA in any given water year

OWNER/OPERATOR OBLIGATIONS

- Maintain accurate data of the sources of water irrigating parcels
- Report accurate data to PVCWD of the sources of water to parcels
- Report in advance to PVCWD when any parcel plans to change its water source(s)
- Water sharing agreements amongst different owners/operators within a single WUA should have agreements in place that considers the following:
 - PVCWD will not be keeping track of how much water is used on individual parcels, PVCWD will only be accounting for gross irrigated acres within a WUA
 - Mid Water Year lease changes i.e. How much water is left and to whom.

SWA CALCULATIONS BACKGROUND – HOW WAS YOUR SWA DETERMINED?

- SWA Formula:

$SWA = SWA \text{ Limit} \times WUA \text{ Irrigated Acres} - WUA \text{ Private Well Allocation}$

- Calculation Inputs:

- Available PVCWD Water Supplies
- PVCWD Hold Back
- Irrigated Acres
- Private Well Allocations

AVAILABLE PVCWD WATER SUPPLIES AND PVCWD HOLDBACK

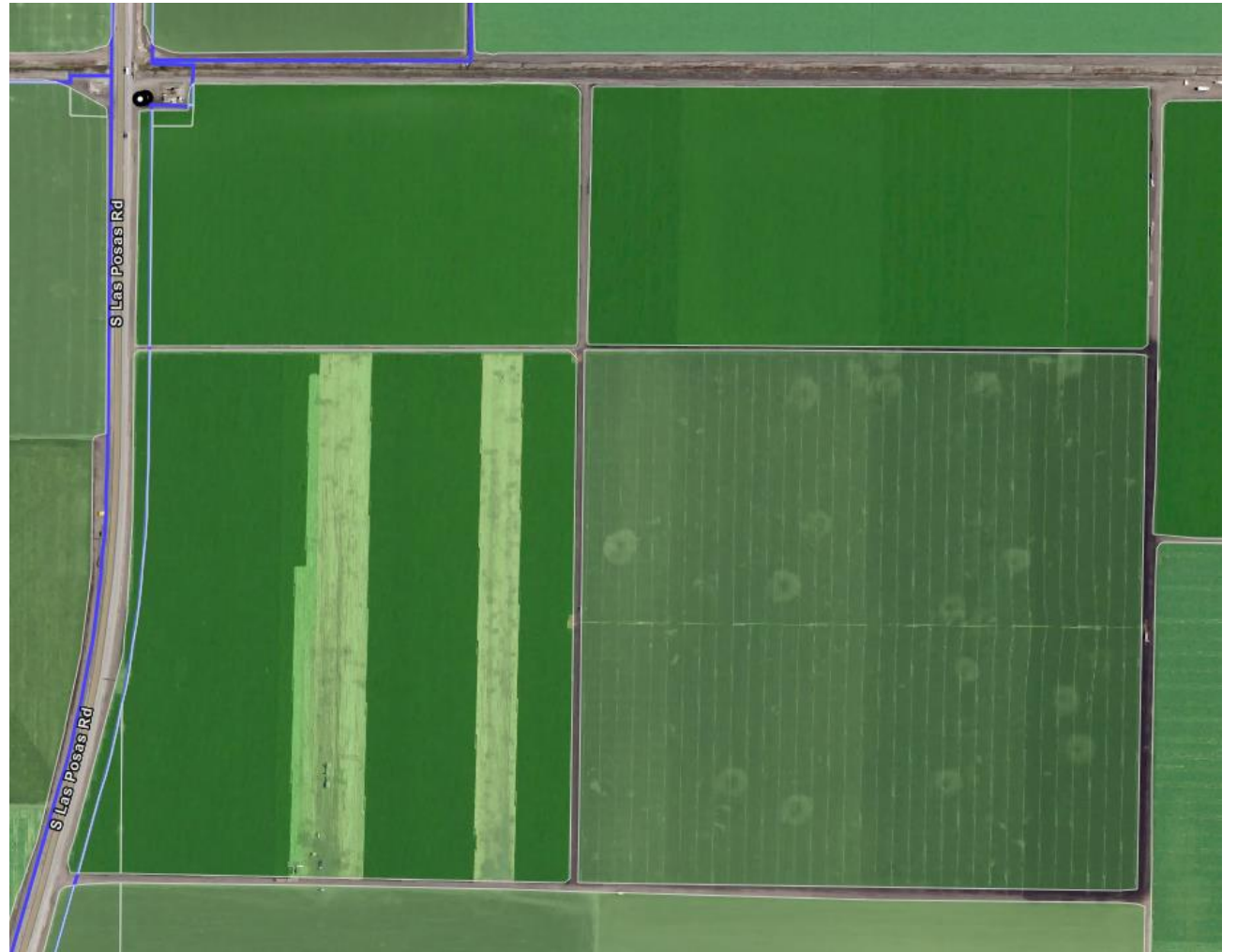
Supply	AFY
Groundwater Allocation	7,040
Conejo Creek Allocation	4,974
Santa Clara River Water Flex Allocation	9,420
Subtotal FCGMA	21,434
CAMSAN	800
CWRF	550
Subtotal Non-FCGMA	1,350
Subtotal District	22,784

PVCWD WATER SUPPLY HOLDBACK

- The amount of PVWCD water supplies reserved to address any issue that may affect availability of District water supplies:
 - Distribution system water losses
 - Groundwater pumping reductions necessary to achieve FCGMA-mandated SCR Flex Balance
 - WUA/SWA variance requests
- For Water Year 2022/2023, the PVCWD Board is holding back 3,700 AF:
 - 2,700 to maintain FCGMA-mandated SCR Flex Balance
 - 1,000 for variance requests

IRRIGATED ACRES

- Determined by Land IQ
 - Independent, 3rd party consultant
 - Specializes in mapping irrigated cropland and determining irrigated acres
 - Performed irrigated acre determinations for Las Posas Valley Basin adjudication



Example Land IQ Irrigated Area
Determination

PRIVATE WELL ALLOCATIONS

- Within FCGMA:
 - Sum of FCGMA allocations assigned to wells that serve a WUA
- Outside of FCGMA:
 - Only two wells
 - Used lowest annual pumping volume from last 10 years reported to UWCD

SWA CALCULATIONS

Supply	AFY
Groundwater Allocation	7,040
Conejo Creek Allocation	4,974
Santa Clara River Water Flex Allocation	9,420
Subtotal FCGMA	21,434
CAMSAN	800
CWRF	550
Subtotal Non-FCGMA	1,350
Subtotal District	22,784
Private Well Groundwater Allocation In District	5,630
Private Well Groundwater Allocation In Excess of District Supplemental Amount	89
Revised Private Well Groundwater Allocation In District	5,542
Total Water Supplies	28,326
District Supply Hold Back	3,700
District Supplies after Hold Back	19,084
Private Wells	5,542
Total Water Supplies for Assignment to WUAs	24,626
Irrigated Acres	10,213
All Water Supplies Acre-Feet Per Acre	2.41

EXAMPLE SWA CALCULATIONS RESULTS

WUA	Private Well Allocation	Irrigated_Acres	Private_Well_AF_Acre	SWA_AF_Acre	SWA_AF
35	0.00	114.13	0.00	2.41	275.19
36	99.06	160.51	0.62	1.79	287.97
37	204.28	76.22	2.68	0.00	0.00

HOW DO I REVIEW AND VERIFY MY WUA INFORMATION?

1. WUA and Preliminary SWA information can be viewed on the webmap online at: <https://map.landiq.com/pleasantvalley/>

Instructions:

<https://pvcwd.specialdistrict.org/files/d25aebc3d/Interactive+Web+Map+Tutorial.pdf>

OR

2. Make and appointment to view your data with Nancy:
nancy@pvcwater.com or 805-482-2119

NEXT STEPS

- July:
 - Please review your WUA information ASAP and work with Nancy concerning any updated information or changes
- August:
 - PVCWD will adopt an ordinance and finalize the WUAs and SWAs for Water Year 2022/2023
- September:
 - PVCWD will notify owners/operators of WUAs and SWAs for Water Year 2022/2023
 - PVCWD will send new turnout service agreements for execution
- October 2022 – September 2023:
 - Track your District water use relative to your SWA carefully to avoid penalties
 - Notify PVCWD immediately of any changes that modify your WUA